

Phone: (763) 255-2555

(800) 328-5454

FAX: (763) 255-2530



3787 95th Ave. N.E.

Blaine, MN 55014

info@arrowheadep.com

www.arrowheadep.com

NEW PRODUCTS

NEW REPLACEMENT ALTERNATORS, STARTERS, AND COMPONENTS



ABO0249
FOR MERCEDES BENZ,
IR/IF; 12-VOLT; 120 AMP;

LESTER 13954;
PIC 220-5134;
Used on:
2003-05 Mercedes Benz C Class w/1.8L

REPL.: **BOSCH**
0-124-515-088;
MERCEDES BENZ
271-154-02-02,
271-154-08-02



ABO0326
FOR SPRINTER,
IR/IF; 12-VOLT; 200 AMP;

LESTER 12385; PIC 220-5132;
Used on:
2005-06 Dodge Sprinter Van w/2.7L
Also fits similar models from Mercedes Benz and Freightliner

REPL.: **BOSCH**
0-124-625-020;
CHRYSLER
5117587AA,
5117587AB;
MERCEDES BENZ
012-154-11-02,
013-154-11-02,
A013-154-11-02



ABO0422
FOR JOHN DEERE,
IR/IF; 12-VOLT; 150 AMP

LESTER 12381, 12782;
PIC 220-5191, -5715;
Pulley Not Included;
Used on John Deere Tractors

REPL.: **BOSCH**
0-123-515-500, -1, -3,
0-124-615-043
JOHN DEERE
AL119537, AL166647,
AL171541



ABO0435
FOR JOHN DEERE,
IR/IF; 12-VOLT; 70 AMP;

LESTER 12445;
PIC 220-5299, -A;
Used on John Deere Agricultural and Industrial Equipment;

REPL.: **BOSCH**
0-124-315-030,
0-124-315-042;
JOHN DEERE
RE509648,
RE529377



ABO0275
FOR Audi,
IR/IF; 12-VOLT; 150 AMP;

LESTER 11064;
PIC 220-337;
Used on:
2002-06 Audi A4 w/1.8L

REPL.: **BOSCH**
0-124-615-009;
VOLKSWAGEN
06B-903-016Q



ABO0350
FOR DODGE TRUCKS,
ER/IF; 12-VOLT; 132 AMP;

LESTER 11233; PIC 220-5099A;
Used on:
2007-08 Dodge RAM Pickup w/5.7L

REPL.: **BOSCH**
0-124-525-111,
0-124-525-155;
CHRYSLER
56028699AB



ABO0427
FOR MERCEDES BENZ TRUCKS,
IR/EF; 24-VOLT; 120 AMP

LESTER 12577; PIC 220-5200, -A;
Used on Iveco Trucks 1991-On, and Mercedes Benz Unitog Trucks 2001-On;

REPL.: **BOSCH**
0-120-689-538,
0-120-689-539,
0-120-689-550;
IVECO
4831585;
MERCEDES BENZ
012-154-47-02,
012-154-50-02



ABO1296
RECTIFIER,

PIC #7720-1117;
8MM BATTERY STUD;
USED ON CHRYSLER, DODGE

LESTER 13777, 13872, 13916, 13917, 13985;
REPL.: **BOSCH**
F-00M-133-202;
REFERENCE NUMBER
IBR225

Phone: (763) 255-2555

(800) 328-5454

FAX: (763) 255-2530



3787 95th Ave. N.E.

Blaine, MN 55014

info@arrowheadep.com

www.arrowheadep.com

NEW PRODUCTS

NEW REPLACEMENT ALTERNATORS, STARTERS, AND COMPONENTS



ADR0248
FOR 26SI SERIES,
24-VOLT; 75 AMP; I/R;
NEGATIVE GROUND;

LESTER 8062;

PIC 240-785;

Used on Caterpillar

REPL.: DELCO

1117281, 19010000,

19010002, 19010008,

19010022, 19010024;

CATERPILLAR

0R3615, 3E7577



ADR0405
FOR 24SI SERIES,
IR/IF; 12-VOLT; 160 AMP;

LESTER 8718; PIC 240-4067;

J-180 Mount;

5/16" Battery Stud;

#10 R / I Terminals;

No Regulator Plug;

Used on Medium and Heavy-Duty Applications

REPL.: DELCO

8600310



AFD0169
FOR 6G SERIES;
12-VOLT; 135 AMP;

LESTER 8517; PIC 250-479;

Clock Position 11;

6-Groove Pulley;

Used on:

2007-08 Ford GT-500 w/5.4L

REPL.: FORD

7R3U-10300-BA,

7R3Z-10346-A



AFD0175
FOR 3G SERIES,
IR/IF; 12-VOLT; 130 AMP;

PIC 250-219C;

10:00 Plug Position;

8-Groove Pulley;

Used on:

2003-04 Ford E-Series Vans w/4.6L, 5.4L, 6.8L

2002-06 Ford E-450 Super-Duty w/6.8L

REPL.: FORD

6L3T-10300-DA,

6L3Z-10346-DA



ADR0360
FOR CS130D SERIES;
12-VOLT; 105 AMP;

7:00 Plug Position;

LESTER 8270-7;

PIC 240-6451;

Used on:

2000 Oldsmobile Alero w/3.4L

2000 Pontiac Grand Am w/3.4L

REPL.: DELCO

10464424,

10480336



ADR0406
FOR 24SI SERIES,
IR/IF; 12-VOLT; 160 AMP;

LESTER 8719; PIC 240-4066;

Quad Pad Mount;

5/16" Battery Stud;

#10 R / I Terminals;

No Regulator Plug;

Used on Medium and Heavy-Duty Applications

REPL.: DELCO

8600889



AFD0172
FOR 3G SERIES,
IR/IF; 12-VOLT; 130 AMP;

PIC 250-219D;

10:00 Plug Position;

6-Groove Pulley;

Used on:

2004 Ford F-Series Pickups w/4.6L, 5.4L

REPL.: FORD

6L3T-10300-DA,

6L3Z-10346-DA



AIA0002
FOR CASE, NEW HOLLAND,
IR/IF; 12-VOLT; 175 AMP;

LESTER 12790, 12791; PIC 282-612, -A;

Used on:

2006-On Case New Holland Applications

REPL.: ISKRA

IA 1349,

AAN5170, AAN5711,

AAN5713,

11.203.255, 11.203.739,

11.203.741;

CASE

87439317, 87677207,

87677208, 87720193;

IVECO

504132109, 504293775

Phone: (763) 255-2555

(800) 328-5454

FAX: (763) 255-2530



3787 95th Ave. N.E.

Blaine, MN 55014

info@arrowheadep.com

www.arrowheadep.com

NEW PRODUCTS

NEW REPLACEMENT ALTERNATORS, STARTERS, AND COMPONENTS



AM00044-OE FOR HEAVY-DUTY TRUCKS, IR/EF; 12-VOLT; 160 AMP;

LESTER 8329; PIC 210-316E;
*This is the OEM Prestolite Version of the
Aftermarket AM00044;*

ALSO REPLACES LOWER AMP UNITS:
LESTER 8328; PIC 210-316HD;
LESTER 8057; PIC 210-300;
Used on Heavy-Duty Trucks

REPL.: **MOTOROLA**
8LHA2070VE;
PRESTOLITE
110-555JHO



AND0271 FOR SCION, TOYOTA IR/IF; 12-VOLT; 90 AMP;

LESTER 13857; PIC 290-5066, -A;
Used on:

2003-06 Scion XA w/1.5L
2000-05 Toyota Echo w/1.5L

REPL.: **DENSO**
102211-1960, -9100;
TOYOTA
27060-21020, -21140



AND0533 FOR KUBOTA, IR/IF; 12-VOLT; 60 AMP;

LESTER 12656; PIC 290-5364;
Used on Kubota D-950 Engines

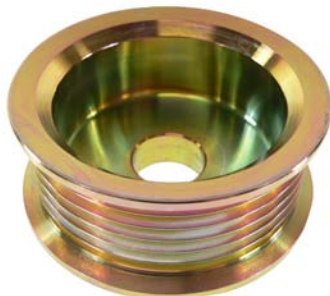
REPL.: **DENSO**
101211-2850;
KUBOTA
16615-64011, -2



AND1047 COVER, SRE FRAME

FOR IR/IF ALTERNATORS;
USED ON JOHN DEERE, LEXUS, TOYOTA;
LESTER 12660, 13992, OTHERS

REPL.: **DENSO**
021551-3600



AND5039 PULLEY, 6-GROOVE

PIC # 7990-9046;
62MM RIB OD x 17MM BORE;
USED ON CADILLAC;

LESTER 11179, 13919;
REPL.: **DENSO**
021041-6940;
REFERENCE NUMBER
24-82278



HDW1326

THRU BOLT,
PIC 9690-9100;
5MM x 0.8 x 77MM L;
DENSO 104210 AND 421000 SERIES ALTERNATORS;

REPL.: **DENSO**
949042-3950;
HONDA
31145-PGK-A01



SAB0166 FOR POLARIS SNOWMOBILE, 12-VOLT; CW; 9-TOOTH;

LESTER 5926;
PIC 106-525;
Used on 2006 Models w/700cc, 866cc

REPL.: **POLARIS**
2410889, 4010965



SBO0249 FOR BPM, LOMBARDINI, RUGGERINI, OTHERS

DD; 12-VOLT; CCW; 9-TOOTH:
LESTER 18468; PIC 120-491A;
*Used on BPM, Lombardini, Ruggerini, and
Other Marine Applications*

REPL.: **BOSCH**
0-001-354-007, -089,
0-001-366-003, -029;
RUGGERINI
56308



SCH0014 FOR ATV'S & SCOOTERS BUILT IN CHINA,

12-VOLT; CW; 9-SPLINE

LESTER 19583; PIC 199-083;
*Used on Kymco and Other Applications With
150cc Engines*

REPL.: **KYMCO**
31210-LLB1-900



SHI0099 FOR ISUZU, OSGR; 24-VOLT; CW; 9-TOOTH

LESTER 18285; PIC 104-256;
*Used on TCM Equipment and Isuzu
Industrial Engines*

REPL.: **HITACHI**
S25-121, -A;
ISUZU
5811001290, -1, -2



SMT0203 FOR ONAN, OSGR; 24-VOLT; CW; 10-TOOTH

LESTER 19605; PIC 103-364;
Used on Onan Engines

REPL.: **MITSUBISHI**
M2T66371;
ONAN
191-1948

Phone: (763) 255-2555

(800) 328-5454

FAX: (763) 255-2530



3787 95th Ave. N.E.

Blaine, MN 55014

info@arrowheadep.com

www.arrowheadep.com

The information herein is based upon data which we believe to be correct and believe to have been obtained from reliable sources, but no representation is made herein, nor should any be implied, regarding the accuracy of any such information and we assume no liability for any errors or omissions in any such information. Any original equipment manufacturers or other manufacturers or distributors, whose names, numbers, pictures, symbols, products and/or descriptions are, or may be, listed or shown herein are used for reference purposes only and there is no representation made or intended, nor should any be implied, that any item reference herein is the product of, or was manufactured and/or distributed, by, the referenced manufacturer or distributor, as the case may be. This brochure is intended for reference purposes only. For pricing or terms and conditions, please refer to your price sheet.

8/11

NEW PRODUCTS

NEW REPLACEMENT ALTERNATORS, STARTERS, AND COMPONENTS



SMU1314

BRUSH HOLDER,

USED IN SMU0263 STARTERS;

NOTE: SMU0263 MAY USE THIS OR SMU1311;



SND0689

FOR KOMATSU, OSGR; 24-VOLT; CW; 10-TOOTH

PIC 190-6238;

Used on Komatsu D41-E;

REPL.: DENSO
228000-4990, -1, -2;
KOMATSU
600-863-4110



SNK0046

FOR KOMATSU, OSGR; 24-VOLT; CW; 11-TOOTH

LESTER 10878, 18104, 18521;

PIC 185-204, -A, -209, -A, -B, -C;

Used on Komatsu

REPL.: NIKKO
0-23000-1290, -1, -2,
0-23000-1410, -1, -2,
0-23000-1430,
0-23000-1550, -1,
0-23000-1750, -1, 2,
0-23000-2560, -1,
KOMATSU
600-813-3320, -3350,
600-813-3360, -4350,
600-813-4420, -1, -2, -3



SNK0049

FOR KOMATSU, OSGR; 24-VOLT; CW; 11-TOOTH

LESTER 19938;

PIC 185-309, -310;

Used on Komatsu

REPL.: NIKKO
0-23000-6981,
0-23000-7000, -1,
0-23000-7002,
0-23000-7860, -1,
KOMATSU
600-813-4921, -2, -3,
600-813-4930, -1, -2,
600-813-4933



SND0649

FOR LAND ROVER, OSGR; 12-VOLT; CW; 9-TOOTH

LESTER 19019; PIC 190-6153, -A;

Used on:

2005-09 LR3 w/4.4L

2006-09 Range Rover SPT w/4.2L, 4.4L

REPL.: DENSO
428000-1921, -2;
LAND ROVER
LR009298,
NAD500160, -E, -310



SNK0045

FOR KOMATSU, OSGR; 24-VOLT; CW; 13-TOOTH

LESTER 18106;

PIC 185-197, -A, -249;

Used on Komatsu

REPL.: NIKKO
0-23000-1230, -1,
0-23000-1270, -1, -2, -3,
0-23000-1590,
0-23000-1660,
0-23000-2570, -1,
0-23000-2650;
KOMATSU
600-813-3380,
600-813-3390, -1, -2,
600-813-4110, -1,
600-813-4120, -1, -2



SNK0048

FOR KOMATSU, OSGR; 24-VOLT; CW; 12-TOOTH

LESTER 18132, 18133, 18134, 19874, 19949;

PIC 185-201A, 186-104, -105, -106, -109, -A;

Used on Komatsu

REPL.: NIKKO
0-23000-7730, -1, -2, -3,
KOMATSU
600-813-3930,
600-813-4210, -1, -2,
600-813-4220, -1, -2,
600-813-8310,
600-813-9320, -1, -2,
SAWAFUJI
0351-702-0222, -3, -4,
0351-702-0250, -1, -2,
0351-702-0610, -1, -2,
0351-702-0613,
0351-702-0630, -1, -2,
0351-702-0680, -1, -2,
0351-702-0683



SNK0052

FOR KOMATSU, OSGR; 24-VOLT; CW; 12-TOOTH

LESTER 18084;

PIC 185-206;

Used on Komatsu

REPL.: NIKKO
0-23000-3150,
0-23000-3151,
0-23000-3152,
0-23000-3153;
KOMATSU
600-813-4530,
600-813-4531,
600-813-4532,
600-813-4533



SND0660

FOR LAND ROVER, OSGR; 12-VOLT; CW; 12-TOOTH

LESTER 19018; PIC 190-6257;

Used on:

2006-09 Range Rover (Exc. SPT) w/4.2L, 4.4L

REPL.: DENSO
428000-2940, -1, -2;
LAND ROVER
LR009299,
NAD500240, -320