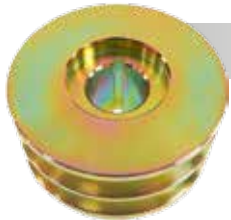




AG / INDUSTRIAL



ADR5000

Pulley,
2V-Groove

PIC 7940-1500;
13mm Belts x 79mm Dia. x
7/8" Bore
For 25SI, 27SI (Type 200),
29SI, and 30SI Series
For Leece Neville
2300-2800JB Series

REPLACES:
DELCO 1953071;
LEECE NEVILLE
73981, 74281, 76046, 76699;
REFERENCE NUMBER 24-1500;

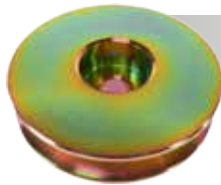


GFD5000

Pulley,
1V-Groove

PIC 7950-502;
93mm OD x 17mm ID
16mm Belt
w/Keyway
For Ford Generators
Used on:
Ford Tractors

REPLACES:
FORD 8N-10130, -A;
REFERENCE NUMBER 81-2702;



ADR5022

Pulley,
1V-Groove

PIC 7940-1105;
16mm Belt x 106mm Dia. x
17mm Bore
For 10SI Type 116 Series
Used on:
IHC Applications

REPLACES:
INT'L HARVESTER
384645R1;
REFERENCE NUMBER
24-1105;



SB00112

For John Deere
DD; 12-Volt;
CW; 10-Tooth;

Lester 17095; PIC 120-499;
Used on:
John Deere Agricultural
and Industrial Engines

REPLACES:
BOSCH 0-001-362-312, -6;
JOHN DEERE AL41247,
AL62690, AL70850, AL110598,
TY6727, TY25952;



APL5001

Pulley,
2V-Groove

PIC 7960-6501;
22mm Belts x 95mm Dia. x
7/8" Bore
For ANB Series
Used on:
Caterpillar, Cummins

REPLACES:
CATERPILLAR
9S6129;
REFERENCE NUMBER
24-6501;



SDR0227

For 37MT Series
DD; 12-Volt;
CW; 10-Tooth;

Lester 6392; PIC 141-350D, -E;
Used on:
Case, Ford, John Deere,
Massey Ferguson, Others

REPLACES:
DELCO
1993705, -12, -26, -952,
10461003, -4;

AG / INDUSTRIAL



SDR6176

Solenoid Control Relay (IMS)
12-Volt;
For Delco Starters

Used on Aftermarket Starter Versions wo/Threaded Holes on DEF Mounts on Solenoid and Can Be Rotated Around Axis of Solenoid Body
Used on:
For 39MT Series (Aftermarket Design)



SNK0065

For Case, JCB, John Deere
PLGR; 24-Volt;
CW; 13-Tooth;

Lester 19763; PIC 185-356;
Used on:
Models With Isuzu 4HK1X Engines
REPLACES:
NIKKO
0-24000-0148, -168, -78;
ISUZU
8980703211;



SNK0060

For 28MT Series
OSGR; 12-Volt;
CW; 12-Tooth;

Lester 6903; PIC 140-927A;
4-Terminal Solenoid
Used on:
Link-Belt
REPLACES:
DELCO
10461462, 10479606;
BOBCAT
6665088;



SND0412

For Bobcat
OSGR; 12-Volt;
CW; 10-Tooth;

Lester 18448; PIC 190-772;
Used on:
Bobcat
REPLACES:
DENSO
228000-6650, -1, -2;
BOBCAT
6669633;

OUTDOOR POWER EQUIPMENT



SAB0187

For Kawasaki Engines
12-Volt; CCW;
10-Tooth;

Used on:
Kawasaki FR600V-AS04
4-Stroke Engines
REPLACES:
KAWASAKI
21163-0728, -7036;



ADR0183

IR/EF; 12-Volt;
63 Amp;

1-Wire Hookup
2-V Pulley
Clock Position 3 O'Clock
Used on:
Universal Applications



AND0420

For Chevrolet, Pontiac
IR/IF; 12-Volt;
155 Amp;

Lester 11156; PIC 290-5219, -A;
Used on:
2007-09 Chevrolet Equinox w/3.4L
2007-09 Pontiac Torrent w/3.4L
REPLACES:
DENSO
104210-2160, -5070;
GENERAL MOTORS
15826299, 25862643;

AUTO

POWERSPORTS



ISU0003

Ignition Coil
For Suzuki

Used on:
1994-96 DR125SE
1996-09, 2013 DR200SE
1991-97 GN125

REPLACES:

SUZUKI

33410-05350;



IYA0008

Ignition Coil
For Yamaha

Used on:
Many ATV, M/C Models

REPLACES:

YAMAHA

3FA-82310-00-00, 3KJ-82310-00-00,
-01-00, -10-00, 4BE-82310-00-00,
-01-00, -10-00, 4JP-82310-00-00,
4KJ-82310-10-00, 85G-82310-M0-00;



SHI0200

For Polaris
Snowmobiles
DD; 12-Volt;
CW; 9-Tooth;

PIC 104-180;
Used on:
Many Models 1985-96

REPLACES:

POLARIS

3083189;

HITACHI

5108-78, -A;



SMU0461

For Kawasaki M/C
PMDD; 12-Volt;
CW; 9-Spline;

PIC 191-477;
Used on:
2008-09 KLX450R w/449cc

REPLACES:

KAWASAKI

21163-0038;

MARINE



TRM0092

For Yamaha
12-Volt;

Used on:
Yamaha F75TLR, F90TJR,
F90TLR, F90TXR 4-Stroke
Power Tilt & Trim Assy.
2005-2008

REPLACES:

YAMAHA

6D8-43880-01-00, -09-00;



TRM3002

Reservoir
For Tilt & Trim
Motors

Used on TRM0027



TRM9301

Hydraulic
Coupler Kit
For Tilt &
Trim Motors

Set Consists of (2) Small and
(2) Extra Large Couplers
Used on:
Many Tilt & Trim Motors

DC MOTORS



LPL6003

Solenoid
12-Volt;

Lester 6847; PIC 141-462;
Battery Terminal 5/16-18
Motor Terminal 5/16-18
Switch Terminal 10-32
Ground Terminal 10-32
Relay Terminal N/A
Isolated Ground
Used on:
Club Car DS And Carryall
Models

REPLACES:

CLUB CAR 1012275, 1013609;



SB00311

For Volvo
DD; 24-Volt;
CW; 9-Tooth;

Lester 18942; PIC 120-512;
Used on:
Volvo Buses and
Heavy-Duty Trucks

REPLACES:

BOSCH

0-001-368-017;

VOLVO

465604, 466772, 1676822;



SND0632

For Chevrolet,
Isuzu Trucks
OSGR; 12-Volt;
CCW; 11-Tooth;

Lester 18500;
PIC 190-6061;
Used on:
1999-01 Chevrolet and Isuzu
Trucks w/Isuzu Engines

REPLACES:

DENSO 228000-8180, -1, -2;

GENERAL MOTORS 97207786;

ISUZU 2901232000, 8972077860,
-1, -2;

COMPONENTS



AB05043

Pulley,
6-Groove

PIC 7920-2068;
OD of Pulley 55mm
Rib OD 49.5mm
L 37.3mm
ID 17mm

Used on Volkswagen

Used on:

Lester 13380, 13381, 13382,
13441, 13605, 13606, 13622,
13833, Others

REPLACES:

BOSCH

1-126-600-524, -934, -5, -50,
-601-524;

VOLKSWAGEN

028-903-1191, -D, F;



ADR5011

Pulley,
6-Groove

PIC 7940-1255;
21mm Belt x 56mm Dia. x
17mm Bore
For 10SI, 12SI, 15SI, 17SI, 27SI
CS121, CS130, CS144 Series

REPLACES:

DELCO

10496811, 1979422, -846, Others

REFERENCE NUMBER

24-1255;



ADR5015

Pulley,
1V-Groove

PIC 7940-1503;
16mm Belt x 105mm Dia. x
22.23mm Bore
w/Keyway
For 25SI Series

Used On Caterpillar, Clark,
Fiat-Allis, John Deere

REPLACES:

CATERPILLAR 4N8090, -225;

REFERENCE NUMBER 24-1503;



ADR5017

Pulley,
3V-Groove

PIC 7940-1505;
13mm Belts x 72mm Dia. x
7/8" Bore
For Delco 27SI Type 205
Series Alternators

REPLACES:

DELCO

2048694;

REFERENCE NUMBER

24-1505;



ADR5020

Pulley,
2V-Groove

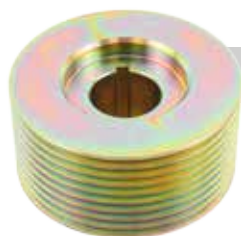
PIC 7940-1102;
13mm Belt x 71mm Dia. x 17mm Bore
Hub is Part of Pulley
22mm From Fan to the Center of the
First Belt (Wider Than Normal)
For 10DN, 10SI Series

REPLACES:

DELCO 1877007, 3947125;

WAI 24-1102;

COMPONENTS



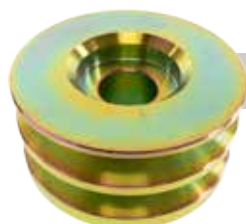
ADR5024

Pulley,
9-Groove

PIC 7940-1750;
32mm Belt x 73mm Dia. x 7/8" Bore
For Delco 25SI, 30SI Series
Alternators

REPLACES:

DETROIT DIESEL 5145471;
REFERENCE NUMBER 24-1750;



ADR5043

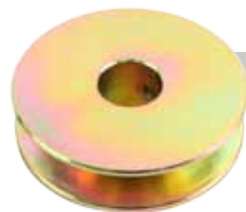
Pulley,
2V-Groove

PIC 7940-1507;
13mm Belts x 85mm Dia. x
7/8" Bore
For 21SI, 25SI, 26SI, 30SI
Series

Used on:
Ford Trucks

REPLACES:

DELCO
830279;
FORD
GP589, D4HZ-10344-A;
REFERENCE NUMBER
24-1507;



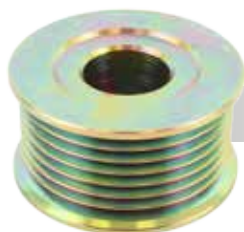
AFD5020

Pulley,
1V-Groove

PIC 7940-1111;
7/16" Belt x 2.50" O.D. x 670 Bore
For Alternators Used
to Replace Generator
Applications

REPLACES:

REFERENCE NUMBER 24-1111;



ADR5036

Pulley,
7-Groove

PIC 7940-1751;
25mm Belt x 55mm Dia x 7/8" Bore
For 20SI, 21SI Series

REPLACES:

DELCO 768, 10468768;
REFERENCE NUMBER 24-1751;

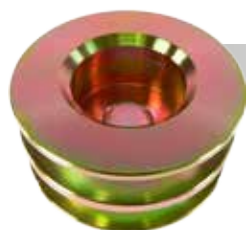


ADR5050

Pulley,
8-Groove

PIC 7940-1270;
28mm Belt x 59mm Dia. x
17mm Bore
Does Not Require Taper Collar
For 12SI Series

CUMMINS 3908560;
REFERENCE NUMBER 24-1270;



AFD5022

Pulley,
2V-Groove

PIC 7950-2106;
13mm Belts x 75.1mm O.D. x
17mm Bore
Used on:
Used on Ford 3G Alternators

REPLACES:

FORD GP688, F1HZ-10344-A,
F1HU-10A352-AB;
REFERENCE NUMBER
24-2106;



ADR5039

Pulley,
8-Groove

PIC 7940-1753;
28mm Belt x 70mm Dia. x 7/8"
Bore
For 21SI Series
Used on:
Ford Trucks

REPLACES:

DELCO 10474925;
FORD GP698, F3HZ-10344-B;
REFERENCE NUMBER 24-1753;



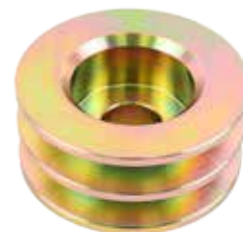
ADR5085

Pulley,
10-Groove

PIC 7940-7754;
35mm Belt x 92mm Rib Dia. x
7/8" Bore
Used on:
Mack Trucks

REPLACES:

MACK 22973C1, 302GC481;
REFERENCE NUMBER 24-7754;



AFD5010

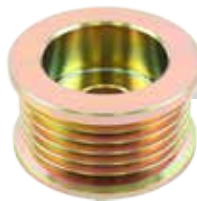
Pulley,
2V-Groove

PIC 7950-2500;
13mm Belts x 85.7mm O.D. x
7/8" Bore
Used on:
Ford 65-90A Truck
Alternators

REPLACES:

FORD
GP484, GP608, C7TZ-10344-A,
E2HZ-10344-A, C7TF-10A352-A,
E2HF-10A352-AA;
REFERENCE NUMBER
24-2500;

COMPONENTS



AFD5032

Pulley,
6-Groove

PIC 7950-2271;
#G 6
OD of Pulley 57mm
Rib OD 50.7mm
L 33.3mm
ID 17mm
ROT N/A
Screw N/A
Used on:
Ford 3G, 6G Series IR/IF
Alternators

REPLACES:

FORD

F7RU-A2A, F7RZ-10344-AA,
XS9U-10A352-AA, -A2A;

REFERENCE NUMBER

24-2271;



AMT5003

Pulley,
8-Groove

PIC 7903-3005;
#G 8
OD of Pulley 61.5mm
Rib OD 54.5mm
L 38.8mm
ID 17mm
Used on:
Lester 13212;

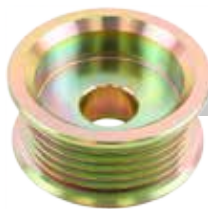
REPLACES:

MITSUBISHI

A679C07470;

REFERENCE NUMBER

24-83258;



AFD5045

Pulley,
6-Groove

PIC 7950-2272;
21mm Belt x 53.3mm Rib O.D. x
17mm Bore
Used on:
Ford 4G Series Alternators

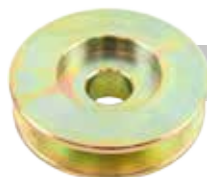
REPLACES:

FORD

1L2Z-10344-AB, 1L2U-10A352-AA;

REFERENCE NUMBER

24-2272;



AMT5018

Pulley,
1-Groove

PIC 7903-3004;
#G 1
OD of Pulley 73.1mm
L 22.6mm
ID 17mm
11mm Belt
Used on:
Lester 13227, 13282, 13350,
13432;

REPLACES:

MITSUBISHI A628T61270;

REFERENCE NUMBER

24-83104;



AND5021

Pulley,
6-Groove

PIC 7990-9015;
OD of Pulley 62.7mm
Rib OD 57.9mm
L 31.5mm
ID 17mm
ROT N/A
Screw N/A
Used on:
Lester 13341, 13442, 13443,
13552, 13748, Others

REPLACES:

DENSO 021041-6950;

REFERENCE NUMBER

24-82263;



AM05004

Pulley,
1-Groove

PIC 7910-4103;
OD of Pulley 66.7mm
Rib OD N/A
L 20.44mm
ID 15.9mm
ROT N/A
Screw N/A
Notes: 10mm Belt
Used on:
Lester 7090, 7369, 7427, Others

REPLACES:

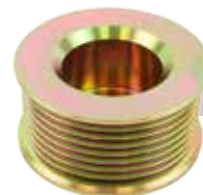
MOTOROLA 7-1;

PRESTOLITE 107-1;

LEECE NEVILLE 4944695A01, -81;

REFERENCE NUMBER

24-4103;



AND5008

Pulley,
8-Groove

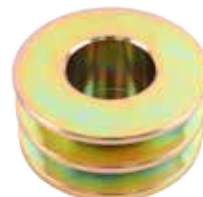
PIC 7990-9014;
OD of Pulley 68.2mm
Rib OD 63mm
L 37.8mm
ID 17mm
ROT N/
Screw N/A
Used on:
Dodge Pickup Trucks

REPLACES:

DENSO 021041-6310;

REFERENCE NUMBER

24-82261;



AND5017

Pulley,
2-Groove

PIC 7990-9007;
OD of Pulley 82.6mm
L 40.6mm
ID 17mm
13mm Belt Width
Used on:
John Deere, Lester 12066;

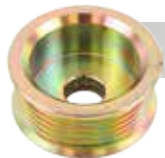
REPLACES:

DENSO 021041-6190, -540;

REFERENCE NUMBER

24-82112;

COMPONENTS



AND5047

Pulley,
6-Groove

PIC 7990-9024;
OD of Pulley 62.5mm
Rib OD 57mm
L 31mm
ID 17mm
Used on:
Chrysler, Dodge, Jeep, Lester
11242, 13790, 13873;

REPLACES:

DENSO 021041-9550;
REFERENCE NUMBER 24-82272;



SHI1309

Brush Holder,
w/Brushes
For Hitachi

PIC 5504-411;
Used on:
Hitachi PMGR Starters

REPLACES:

REFERENCE NUMBER
69-8115;



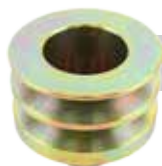
SMT1317

Brush Holder
For Mitsubishi
Starters

PIC 5504-411;
Used on:
Mitsubishi DD Starters
Lester 16203, 16522,
16795, 17069, 18097,
30292, Others

REPLACES:

CHRYSLER
5213785;
ONAN
191-1006;
REFERENCE NUMBER
69-8306;



APL5002

Pulley,
2V-Groove

PIC 7960-6502;
16mm Belts x 95mm
Dia. x 7/8" Bore
For ANB Series
Used on Caterpillar

REPLACES:

CATERPILLAR 5S7609;
REFERENCE NUMBER 24-6502;



SLU4413

Field Coil
For Lucas
Starters

PIC 5280-644;
Voltage 12
Rotation CW
Length Inner 76.2mm
Width Inner 29.8mm
Stud Size 1/4-26 BSF
Note Regular Torque
Note Long Brush Length
Used on:
Lucas M50, M127 Starters

REPLACES:

LUCAS TEB-144, 54268462;



SND1312

Brush Holder
For Denso
Starters

PIC 5590-9017;
Used on:
Denso 1.2kw OSGR Starters
w/Cast Aluminum C.E. Frame
& 45mm Field Case Length

REPLACES:

DENSO 028510-5360;
HONDA 31208-PM3-J01, -0M;
ISUZU 8943772580;
TOYOTA 28140-76060;
REFERENCE NUMBER 69-8207;



APL5003

Pulley,
2V-Groove

PIC 7960-6500;
16mm Belts x 91mm
Dia. x 7/8" Bore
For ANB Series
Used on Case

REPLACES:

PRESTOLITE 34-399, PU-697;
CASE A44442;
REFERENCE NUMBER 24-6500;



SMM5012

Drive
10-Tooth; CW;

PIC 6102-2028;
Gear OD 40.5mm
Gear ID 12.1mm
OAL: 72.9mm
Clutch Type Roller
Used on:
Perkins Engines
Lester 18940, 18941



SND5007

Drive
9-Tooth; CW;

PIC 6190-2367;
Gear OD 29mm
Gear ID 12.5mm
OAL 82mm
Clutch Type Roller
Used on:
Daihatsu, Honda, Kubota,
Toyota

REPLACES:

DENSO
028300-0660, -0900, -1, -10, -1,
-1950, -1, -3350, -1;
TOYOTA
28011-15010, -41020, -1, 60040, -1;



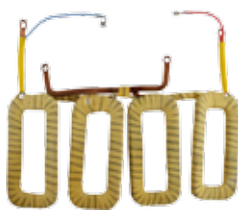
SNK5017

Drive
12-Tooth; CW;
For Nikko

Gear OD 46.2mm
Gear ID 19mm
OAL 96.6mm
Clutch Type Roller
Used on:
Nikko Starters

REPLACES:

NIKKO 0-23500-0970, -4;



SB04420

Field Coil
For Bosch
Starters

PIC 5220-1002;
Voltage 24
Rotation CW
Length Inner
101.6mm
Width Inner 30.2mm
Stud Size N/A
Notes Regular Torque

COMPONENTS

Used on:
Bosch 410, 411 Series
Starters

REPLACES:

BOSCH

2-004-125-000, -4, -5, -6, -7,
-8, -9, -29, -30, -1, -6, -52;



2014
POWERSPORTS CATALOG
NOW AVAILABLE

POWERSPORTS EDITION 2014

View and download the new 2014 Powersports catalog along with our other product catalogs, New Products flyers, specials, coupons, product catalogs, and more online at www.arrowheadep.com

WE KEEP YOU RUNNING

MAIN LOCATION

NATIONAL: (800) 328-5454
LOCAL: (763) 255-2555
FAX: (763) 255-2530
3787 95TH AVE.
BLAINE, MN 55014

CANADA

TOLL FREE: (877) 617-2888
NATIONAL: (416) 645-1970
FAX: (416) 645-1972
398 CANARCTIC DRIVE
NORTH YORK, ONTARIO M3J 2V3

WEST COAST

NATIONAL: (800) 457-1728
FAX: (209) 537-2856
821 OATES COURT
MODESTO, CA 95358

EAST COAST

NATIONAL: (855) 214-0712
FAX: (508) 857-0586
145 BODWELL ST.
AVON, MA 02322